

Kingsclere Parish Council

Annual Report 2008/9

Parish Councillors

Andy Bates
15 North St

Lynne Baker [vice Gibb]
1 Basingstoke Rd

Janet Bond [ret May 2009]
3 Cottington Close

Jim Gibb [ret 2008]
4 Phoenix Court

Peter Goff
57 Garrett Close

Ray Peach
7 Poveys Mead

Louise Porton
11 King John Road

John Rodway
14 Hook Road

Richard Smith
16 Byfields Road

Peter Woodman
6 The Dell

Parish Clerk

Sheila Thompson
Office: 37 George St
Phone/fax: 01635 298634
Email:
clerk@kingsclere.gov.uk
Web:
www.kingsclere.gov.uk

Assistant Clerk
Fiona Sawyer

Litter Warden
Carole Bullard

Chairman's Report

It gives me great pleasure to announce the award of Quality Status to your parish council. A lot of hard work by Sheila in pulling together our portfolio was rewarded in April 2009. This was quite a tough task to demonstrate that we really were quality in all we did and we are all grateful for all her effort.

What does it mean? Well, firstly we can adopt the power of well-being which enables us to spend money for the general benefit of the community rather than being confined by the rules for the 'free resource'. We can take over more work from the Borough provided they resource it. We have also been told that quality councils find it easier to raise grant aid.

This year sadly we have lost two stalwarts of the parish council. Jim Gibb was forced to take leave of absence following his wife Cecily's major accident and then decided that the work of caring for her was too great. Jim worked very hard on social housing and the new houses/flats in Ash Grove and Stokins Rd are a monument to his patient hard work. His great love of cricket is reflected in the new All Weather Wicket on the Holding Field.

Janet has reluctantly ended a long career in local government including having been Mayor of Reading. Since coming to Kingsclere she has taken a great part in community life. As a parish councillor she has worked hard looking after our various properties. She has particularly worked to maintain the Rec putting the hedges and wild flower meadow in good order and commissioning a very interesting interpretation board to enhance the visitor experience.

She has tackled the difficult issues of the burial grounds with determination. This has required the upgrading of the regulations and the charges. Unfortunately the modern climate of risk aversion has required a lot of attention to health and safety issues which she has tackled firmly to eliminate hazards. Perhaps her most sensitive action was to draw our attention to the paupers' graves and to initiate the installation of a memorial stone to all those buried without a memorial.

She will continue to play a full part in community life and is currently the President of the WI among other activities. She will also continue to be the driving force behind the Tidgrove excavations

Through the Looking Glass 2009/10

The Greek word is 'hubris' so we hope we are not tempting fate by predicting that we will open the new **Children's and Young People's Centre** on the Holding Field at Easter 2010.

At the time of writing we are waiting for the news that two grants totalling £375k will be approved in June enabling us to commission a basic building. Before work starts we hope to have other funding in place to complete the full building.

June will see the start of the trial of a **Speed Indication Device [SID]** in Newbury and Basingstoke Roads. This device will measure the speeds of all vehicles passing it and record them. We will also be installing a traffic recorder downstream to check the effectiveness of the trial,

We hope also to complete the work on lowering the **bridges** over the brook and the lake between Swan St and Fox's Lane.

Some repairs are required to the abutments [piers] before work can start and we hope that funding will be by an environmental grant.

Having taken responsibility for the **Churchyard Trees** we are hoping to implement the management plan in the coming Autumn. This requires the approval of the PCC, the Borough Tree Officer and the Diocesan Committee before work can start but we aim to have a ten year work plan approved.

The Village Club

The major disappointment this year has been our continued problem with the funding of the main hall extension. It seems we are not alone as no building in the Borough received a Community Spaces grant from the Lottery [many applied] but it is very frustrating.

This year we decided on bringing the Holding Room to a suitable standard to be a Marriage Room and enable people who wanted a value wedding to be able to marry at the Village Club which already offers registration for births and deaths. We would then have replaced the old facility in Swan St.

We have now redecorated most of the building but it's almost as bad as painting the Forth Bridge especially the main hall which constantly suffers from knocks and blutak. Our big task now is to complete the upstairs new fire escape arrangements. This has been a difficult task but we now have all the equipment needed and we will be there.

Bill Cooper took over the job of organising, staging and marketing our evening entertainment and produced an excellent programme of events with broad appeal.

Josie Norton has continued to organise the coach trips under the Village Club brand with lots of success. Peter Woodman

Kingsclere Charities

Robert Higham Charity assists students resident in Kingsclere, Ashford Hill and Headley between 16 and 25 with the costs of attending college or university. During the year 36 students received grants totalling £5530.

The charity also assists the primary schools with special projects.

Kingsclere Welfare Charity assists residents with financial problems [usually medical needs outside the scope of the NHS]. Last year grants totalling £200 were made.

Kingsclere Almshouses Charity Routine maintenance was carried out.

Enquiries to the Roy Forth, Clerk to the Trustees on 07796 423 108

Street Furniture

A request was received from a resident, to consider a small committee to review the amount and type of street signs and furniture in the village. The Street Furniture group was subsequently set-up and the first meeting was held in March 2009.

The overall consensus of the group was that we were primarily interested in reducing the number of signs around the village. The following key points were highlighted:

A number of signs were considered unnecessary, for example 'Thank you for driving carefully';

A number of signs were now out of date, for example 'Neighbourhood Watch';

Some signs are considered too large and hideously coloured;

Some signs are inappropriately placed, for example over hedges.

The dog control order notices were also mentioned but have been dealt with separately.

It was decided that a review is needed to take place of the signs on the main routes into our village. Photographs were taken of signs on Basingstoke Road, Ashford Hill Road, Newbury Road into George Street, Ecchinswell Road, Sydmonton Road into Foxs Lane and Winchester Road into Swan Street and Bear Hill.

Taking the pictures was quite an eye opener, not only to the amount of signs but also the cleanliness (or not) and just how many are obscured by hedges!

The photographs were then discussed at the end of March and a report is being produced to submit to the council for further discussion.

Louise Porton

Emergency Planning

We have had some experiences in the last year which suggest the need for local emergency planning. This could be to cope with anything from severe weather to taking refugees from a civil emergency. A working party will make recommendations. If you would like to help please call Sheila on 298634

Kingsclere Youth Club

It has been a fantastic year for Kingsclere Youth Club in spite of the lack of a building of our own.

We decided to have a trial run of six sessions starting in June last year and although we were far from sure that there would be any demand at all the response was so positive that it immediately became a permanent thing.

Towards the end of autumn the Bowls Club and Tennis club kindly invited us along to try out their facilities and in both cases this led to some of our members becoming involved in the respective clubs on a permanent basis. During the winter months the lack of a place to meet forced a change of direction and we focused on having events once a month instead of weekly but making them on a grander scale – a visit to Thorpe

park, a drumming workshop and bowling to name but a few.

Now that spring is upon us we are back to meeting weekly on a Thursday night at the village club – although we will still regularly run special trips for the group as these are always well received.

We feel passionately that even in the 21st century there is very much a place and a need in our village for a youth club and we are focused on getting a building of our own so that we can continue to nurture and develop what we have started. The Youth of Kingsclere are a good bunch of people and deserve some facilities that they can call their own.

Richard Smith

Recycling

Are we suffering from recycling fatigue? I hope the residents in Kingsclere are not because we have had a very good rate of recycling occurring here. Sometimes we can all feel a little despondent, wondering "What difference can I as an individual or a family make?" We must then take the time to consider the cumulative effect. Small changes to lifestyles add up to a big difference to our local environment .

Louise Porton

Recycling is a very topical issue , with headlines about stock piles and the collapse in demand for recycled materials. Market prices for recyclates changes with the economy but to lose faith now would be disastrous, businesses have been built around recycling. The signs are that the market is recovering, It's good news, so keep up the good work.

Improving our recycling rate is now more pressing than ever before with government targets of 40% by 2010. We need to be concerned about reaching this target, with its rapidly approaching deadline as the current figure for Basingstoke and Deane is 23%. A special panel has now been set up to investigate how the borough can boost its recycling rate.

There is overwhelming evidence that alternate weekly collections of black bins, creates a significant increase in recycling rates, as much as 12%. Fortunately our borough councillors are resisting this suggestion but one wonders for how much longer. Fareham Borough council, with a 42% recycling rate, suggested that alternate weekly collections made the single biggest difference as the black bin has a limited capacity. Fareham also collect green garden waste for free but we have to pay £28 per year here. Hopefully the panel will suggest a free garden waste collection before fortnightly collections on black bins.

At the moment the borough has limited the plastic we can put into our green wheelies to bottles. The reason for this being that it is not considered economically or environmentally sustainable to send material to the other side of the world for recycling. The big question here is, if its helping other countries develop is it immoral not to ship our recycling back to them?

So, how can we increase our recycling rate? Without knowing exactly how the statistics are calculated, its difficult to say but ulti-

mately there must be a calculation involving how much waste is incinerated or landfilled against against how much is recycled. Therefore if we are recycling all we can in our green bins and using our recycling centres what else can we do? Well, we must reduce the waste that goes into our black bins.

If you are not already home composting, give it a try as it is estimated that 30% of our household waste could be composted. Also try reducing the amount of waste that comes into your house by avoiding excessive packaging. Most householders' number one irritant when it comes to

“ Improving our recycling rate is now more pressing than before “

waste is excessive packaging. Why the onus is placed on consumers to dispose of waste dutifully when the problem is 'upstream' is baffling!

Another important step is to make sure that our recycling is not contaminated. Recyclables need to be clean, so rinse bottles and cans (this also ensures that paper is not contaminated too) as if contaminated our recycling can end up going to the ERF (Energy Recovery Facility).

At the medieval fete last year, people were polled for interest in a tetra pak recycling bin at the Fieldgate Centre. Everyone asked expressed an interest but a few had not realised that these could not be placed in the green bins. As these drinks cartons are made of a mixture of paper, plastic and foil they require special re-

cycling facilities. Unfortunately we have not been successful in obtaining a bin at present so please continue to put them in your black bins to avoid extra sorting at the MRF (Materials Recovery Facility).

Make sure that items in the green bin are loose because if items are in a bag it can get caught up in the machinery at the MRF.

A frequent comment from householders is 'Nobody explains to me what happens to my waste'. So, this issue will be covered in our 'Recyclere' articles in the Tower over the coming months along with more information on composting and what to do with shredded paper.

Finally, did you see our scarecrow at the festival in St Mary's last year? He was lovingly made out of materials that can be recycled in your green wheely, apart from a little bit of 'sticky back plastic' and a piece of string! After the festival, sadly he was dismantled but happily recycled!

Louise Porton

Footpaths

This year we have continued our regular last Sunday of the month outings to maintain our 23 miles of footpaths, cycle paths and bridle ways.

Our big achievement was the reconstruction of part of Hollowshot Lane from just beyond Phaleron Cottages to theeastern edge of the galleps

This area had become very badly eroded by vehicles delivering feed to the horses in the adjacent paddock.

In absolutely foul weather a team from Kingsclere with HCC staff were joined by members of Community Payback to complete the work. There is now a good, well-drained surface where formerly there was a muddy mess.

If you would like to join us we meet at the Village Club on the last Sunday of the month and work for two to three hours.

For more info call Kathy Phillips on 01635 299587

**COUNCILLOR KEITH CHAPMAN
HAMPSHIRE COUNTY COUNCIL MEMBER
FOR CALLEVA & KINGSCLERE**

HAMPSHIRE COUNTY COUNCIL The Council tax increased by 1.9% this year, one of the lowest county council rate increases in the country. As you know the Government gives support to local authorities to relieve the burden on council tax payers. In Hampshire we now have the lowest support grant and the council tax payers of Hampshire have to pay the difference to ensure the services that the County Council provides are adequately financed.

In spite of this, a recent government report stated that Hampshire County Council is a Four Star authority and 'improving strongly.' This is the highest mark achieved by any authority in the U.K, with more resources being put into the areas of Children's Services and Highways.

ADULT SOCIAL CARE Last year I reported that there was to be a fundamental change in how we provide Adult Social Care in Hampshire. The differences will be that whereas now we assess what a person requires and then provide the services for that individual, in the future the person who requires the care will be given a budget to provide their own services. That could be from HCC or other agencies. This appears to be going very well. Hampshire County Council commissioned a report as part of the review and lobbied government to increase its allowance up to £60,000 before an individual has to pay to use social care accommodation.

HAMPSHIRE MUSIC SERVICE The Music Service has again done really well this year and is the best in the country, still fully supporting 72 ensembles. A super concert, 'The Big One' was held in Farnham Hall for all special care children. The theme of this was green issues.

HIGHWAYS The County Council is pursuing the policy of 30mph in villages which I support.

COMMITTEE MEMBERSHIP I represent the County Council on the following committees:

- 1) Chair of the Culture & Communities Committee. Two major reviews have been undertaken – Library Service Review and Outdoor Centres Review.
- 2) Member of the Policy & Resources Select Committee.
- 3) Member of the Health Overview & Scrutiny Committee. I also sit on the Foster & Adoption Panels.
- 4) Member of Hampshire Fire & Rescue Authority, and Chair of the HFRA Human Resources Committee.

COUNTY COUNCIL MEMBERS' GRANT SCHEME The County Council again allocated £10,000 to each Councillor to distribute to village organisations. Last year I spent the £10,000 in areas of Hannington, Kingsclere and Silchester while this year I gave grants to Kingclere, Pamber, Sherfield on Loddon, Bramley and Stratfield Saye.

Prologis

The planning appeal last Autumn found in favour of the Prologis planning application to build warehouses on the highest part of the Greenham Business Park.

This was particularly disappointing as the planning inspector accepted the Prologis argument that the developments would have no impact on traffic levels on the A339 despite there being no evidence

as to the type of occupancy for the five units.

Following the decision the credit crunch appears to have brought most things to a close especially as the Prologis US HQ has been going through some turmoil.

They have been given temporary permission to store vehicles on the Greenham Common site.

Achievements

This year we have:

Byelaws The new and simpler byelaws are now adopted and have force of law. Their principal aim is to achieve safe use of our facilities. Copies from the office.

Holding Field The new all weather surface has been installed on the tennis courts and has proved to be a very popular improvement.

With funding from the Veolia Trust we have been able to clear the 'jungle' which formed the hedge alongside the 'Cut' and are planting new hedging. Hampshire Highways have resurfaced the Cut and serviced the street light. Veolia has also funded a new seat and litter bin besides the Tennis Courts.

Grants We are the biggest sponsor of the Clere School prizegiving. We gave the Scouts a new hot water boiler for their kitchen

We have also donated to the Hampshire School Band to buy new instruments as well as giving smaller grants to other groups.

CCTV This is now accessible via the internet [securely] enabling access to the police outside Kingsclere. We are exploring how to connect the School system in so that Brian can view that from the Beat Office

Burial Grounds We are grateful to the owners of plots who made their memorials safe following the work of our testers.

Housing We are discussing the possibility of a small group of social houses alongside Longcroft. This is a tricky site and it is unlikely to realise more than eight dwellings. Not many set against the eighty plus still needed for people with Kingsclere connections

The Square Volunteers worked last Autumn to dig out the beds and relay them with new plantings and ground cover. The work was funded by the council and we are grateful for their help.

The Rec We have continued to cut back the overgrown hedges with help from Hampshire Wildlife Trust

Cemetery Memorial Testing

Ideally we would not have to do this as it can be very distressing for relatives. However, there have been some horrific accidents in cemeteries in other parts of the country and as such the government has asked councils to begin inspecting.

According to a Health and Safety Commission report, from 1999 to 2004, there were three deaths and eighteen other serious accidents from unstable memorials in cemeteries. A six-year-old boy from Harrogate, north Yorkshire, was crushed to death when a five-foot high head-stone fell on top of him in 2007

Safety First Kingsclere Parish Council have a duty to assess the risk from all cemetery structures, including memorials. It is important, as managers of the burial grounds, to take seriously our responsibilities for health and safety. The risk associated with unstable memorials is real and cannot be ignored.

Secondly, although not as important, there is also a growing risk of being sued if there is an accident. It is estimated that across the country, about a third of gravestones – the most common memorial since the 1950s – have failed safety checks.

A big problem is the age of some memorials but modern headstones also represent a real risk. Modern memorials are supposed to have anchors of concrete or stainless steel to keep them upright, but too often a headstone is laid on a thin concrete base, which offers little protection against subsidence.

After receiving a training session covering the practical, legal and health and safety elements of memorial management, a team was set up to assess the cemetery. An effective, risk-based approach was taken by first gaining a profile of the different types of memorial currently installed in the burial ground.

A site survey identified the various designs and materials of individual memorials, their historical and social importance, and the likelihood of members of the public visiting or walking past particular memorials. It was an

essential first step to enable prioritisation of and provide a focus for the inspection and assessment process.

We also had to consider that less frequented areas may attract anti-social behaviour, or may need greater maintenance as relatives are no longer tending memorials.

“ From 1999 to 2004, there were three deaths and eighteen other serious accidents from unstable memorials in cemeteries. “

Memorials situated on a sloping or uneven ground, may present an increased risk. Multi-part memorials, which depend on bonding of their parts for stability, could present a risk if the joint had failed.

Some memorials might have been made of material which more readily erodes and becomes unsafe. On the other hand the risk of joint failure is absent in monolithic monuments, and memorials with a broad base are less likely to fall than those with a relatively narrow base. More recent memorials should be designed to British Standard 8415, and the construction, dowels and fixings should be in accordance with the National Association of Memorial Masons (NAMM) Code of Working Practice. Memorials installed to these practices have greater assurance of good stability.

The next step was a visual inspection for obvious signs that a memorial is likely to be unstable. This involved looking for:

- Damaged or eroding bonding;
- Movement of parts of a memorial from its original position;
- Kerb stones breaking apart;
- Undermined or unstable foundations;
- Leaning memorials – particularly if there is evidence of recent movement;
- Evidence of structural damage

or disturbance (e.g. Cracks);

The presence of vegetation, which may cause cracks etc to widen.

Having completed a visual inspection, a hand test was then performed to help confirm that assessment and identify if there were any stability problems – this test did not involve any tools or equipment.

The hand check was carried out by standing to one side of the memorial and applying a firm but steady pressure in different directions to determine to what degree if any the headstone was loose. Where some instability was detected, a judgement had to be made as to whether this movement was limited, or whether there was sufficient movement for the memorial to present a high risk to people's health and safety.

Where necessary, a notice was placed on the memorial. Fortunately very few memorials required lying down and some have been recorded for more frequent checks. In most cases every thing was fine and the memorial will not need to be checked again for 5 years.

Memorial owners are often unaware

Is your memorial safe?

of the instability in a headstone as it is not necessarily visible and can only be detected if it is either tested or inadvertently leaned upon. Unstable memorials are not a sign of neglect. People are often understandably upset when they find out that their headstones are unsafe.

But under health and safety regulations and in the interests of everyone's safety, memorial owners will be required to carry out some maintenance where their headstones are found to be unstable. It's important to recognise that a lot of other people do come regularly, and do keep an eye on the maintenance of their stone, and we applaud those who have managed to do that over the years.

Louise Porton

Holding Field Working Group

The Holding Field Group have continued developing their plans for the new building on the Holding Field and adjacent land. Over the past year it became apparent that the needs of the participating groups had changed since the original feasibility study and thus the plans have been extensively revised.

The Youth Club will now have its own secure area so that its equipment can be left out all the time thus minimising damage due to being constantly assembled and dismantled. A separate area will be available for other user groups.

The building will still incorporate changing facilities, toilets and storage areas to be used by the Kingsclere Youth Football teams and will also be available for youth cricket to enable full use of the all-weather wicket.

The Busy Bee's Preschool will now have their own exclusive area which will enable them to double their intake and offer all day care. They will also, with the co-operation of local schools, be able to offer extended school facilities from 7.30am till 6.30pm. thus benefiting families where both parents have work. They will also have use of a training room so they can offer child care training courses to outside organisations.

During the latter part of the year we were made aware of the need by HCC of a place to site a Sure Start hub. We made HCC aware of our proposed building and are working towards being selected as the site of the proposed Centre.

During the year we applied to Myplace (a Government fund administered by the Big Lottery) for a grant of £800K but were turned down because our project did not meet the requirements as we had not applied for more than £1M

We are continuing to approach various organisations for grants and are hopeful of completing the building by mid 2010.

Peter Goff

Retailers Forum

Andy Bates will be the new parish council observer at the Fieldgate Centre and Lynne Baker, who has her own business in the village becomes the link between the parish council and local businesses

CCTV We have migrated most of the system to broadband allowing police to monitor the system from anywhere with an internet connection. The new system eliminates an expensive fibre-optic connection.

We hope to enable a connection to the School CCTV so that the camera can be monitored on our internet system. This could be extended to the Fieldgate and the new Holding Field centre in future.

We have first class local businesses who work hard for Kingsclere.

Use them or lose them!!!!

Business In times of credit crunch and this year's high fuel prices people are keen to travel less and hopefully shop locally more. In these crunch times loss of trade could be the final push which forces some of our local retail businesses into bankruptcy.

The George and Horn has recently been given planning permission for substantial improvements and we look forward to seeing the work start. All pubs continue to offer rooms which helps to keep them as a viable business.

Promotional Signs We are still working on methods to ensure that a few of the 1000's of cars which pass the village on the A339 can call in to use our local shops, pubs and restaurant.

Twinning This year we had an opportunity to twin the village with a village in France. Unfortunately we missed out on this opportunity but now we have gauged a strong hold of volunteers willing to help, in the forthcoming year we will make another attempt to push this forward.

Broadband Some people have noticed that broadband in the village is slowing down as new services such as BBC I-player increase demand on our local exchange. We will be looking into this and are working closely with another parish council to swap ideas on how an improvement can be made. If any one has noticed service is slowing down generally or at particular times of day please let us know.

Christmas lights this year were working again although on a slightly reduced service after several years of high wind damage. We will be working on a long term lower maintenance solution for next Christmas.

Andy Bates

Registration of Births, Marriages and Deaths

In 2000 we nearly lost the services of a Registrar when the county council decided to give up their lease on a suite of offices at 24 Swan St.

At that time they offered a very part-time service for registration of births and deaths and marriages were by appointment usually on Saturdays.

The Village Club offered space for the registration of births and deaths to continue as before on Monday and Thursday afternoons by appointment only. The intention was to offer weddings as well but Fire Officer Jobs-worth intervened.

The fire exit problem has now been resolved with some work and another inspection still to be done before opening.

The Village Club has now completely refurbished the first floor rooms to provide an attractive Marriage Room and Bride's Dressing Room. The aim is to offer a marriage which doesn't break the bank and the main hall and kitchen can also be hired for the reception. Not a cheap marriage but a bargain one.

Basingstoke Registrar 01256 322188

Village Club- Emma Hartley 01635 297913

KINGSCLERE PARISH CONSTABLE

The Beat team consists of PC Brian Dixon, the Parish Constable, Divisional Officer Stuart Packham, Special Constable and Police Community Support Officer Sarah Traynor, who shares her patrol time between Kingsclere and Tadley. Line-managers are Sergeant Terry Arrowsmith and Inspector Paul Robertson. The past year has seen a new PCSO and the relocation of the rural targeted patrol team from Whitchurch to Basingstoke. We continue to enjoy the use of a dedicated Beat Office in the Village Club

Compared with last year here has been a slight increase in the number of incidents requiring police involvement. This is not all crime related issues and includes attendance at traffic accidents, suspicious incidents and domestic disputes to name but a few of the incident types attended by police.

On the crime front, the number of burglaries has, unfortunately, seen an increase. Several factors may be an influence in this figure - the current economy, unemployment, limited police resources etc. Reducing the number of incidents of this horrible offence is a priority for the Beat Team. Incidents of theft, theft from motor vehicles and theft of motor vehicles have all seen a decrease in the last year.

The number of damage incidents has had a very slight increase. This year there were a number of youths who thought it would be a good idea to go around Kingsclere throwing stones at properties and vehicles. We expect the number of damage incidents to decrease in the forthcoming year. The number of nuisance calls has remained the same but is very low for the size of the Beat area.

Overall, whilst the burglary figures are disappointing, the Beat remains a safe place to live, and the Beat team remain committed to doing all that they can to keep it that way, and to reduce further all the issues that affect the quality of life of the community.

I will conclude this report by thanking everyone for their continued support to both me and my colleagues, and I look forward to serving you all again in the coming year.

PC 2061 Brian Dixon

Notes to the accounts

The report above is based on the unaudited accounts for 2008/2009 and presentation may change in the final accounts.

As we use the Receipts and Payments convention the accounts do not show accruals and prepayments. In particular we have only received half our grant for the Litter Warden and are due to receive a further £2897 from the Borough of Basingstoke and Deane for the year 2008/9. She has already been paid from KPC funds.

The refurbishment of the Tennis Courts saw the installation of a sand-filled aero turf playing surface. The total cost of £18120 was met with a grant of £13600 from the Borough, £1000 from the Tennis Club and the balance of £3520 from a Parish Council grant.

The contribution to the Holding Field Feasibility Study included

legal fees of £1323 legal fees and £1713 towards the cost of producing the feasibility study and the plans. Not included is the £6000 contribution from developer's contributions from King Alfred Terrace paid by the Borough.

The expenditure on smartening the north east corner of the Holding Field was met from a grant from the Veolia Landfill Trust.

Salary costs include National Insurance and employer's pension contribution of 18.5%.

Grants to local organisations

Kingsclere Scouts - new water heater £418
 Victim support £100
 Loan for youth club fete £211 [since repaid]
 Stall at fete £100
 Sponsored prizes at fete £125
 Vitalise [breaks for carers] £200
 Clere School prize giving £150.

Financial Report 2008/9 Flow of Funds

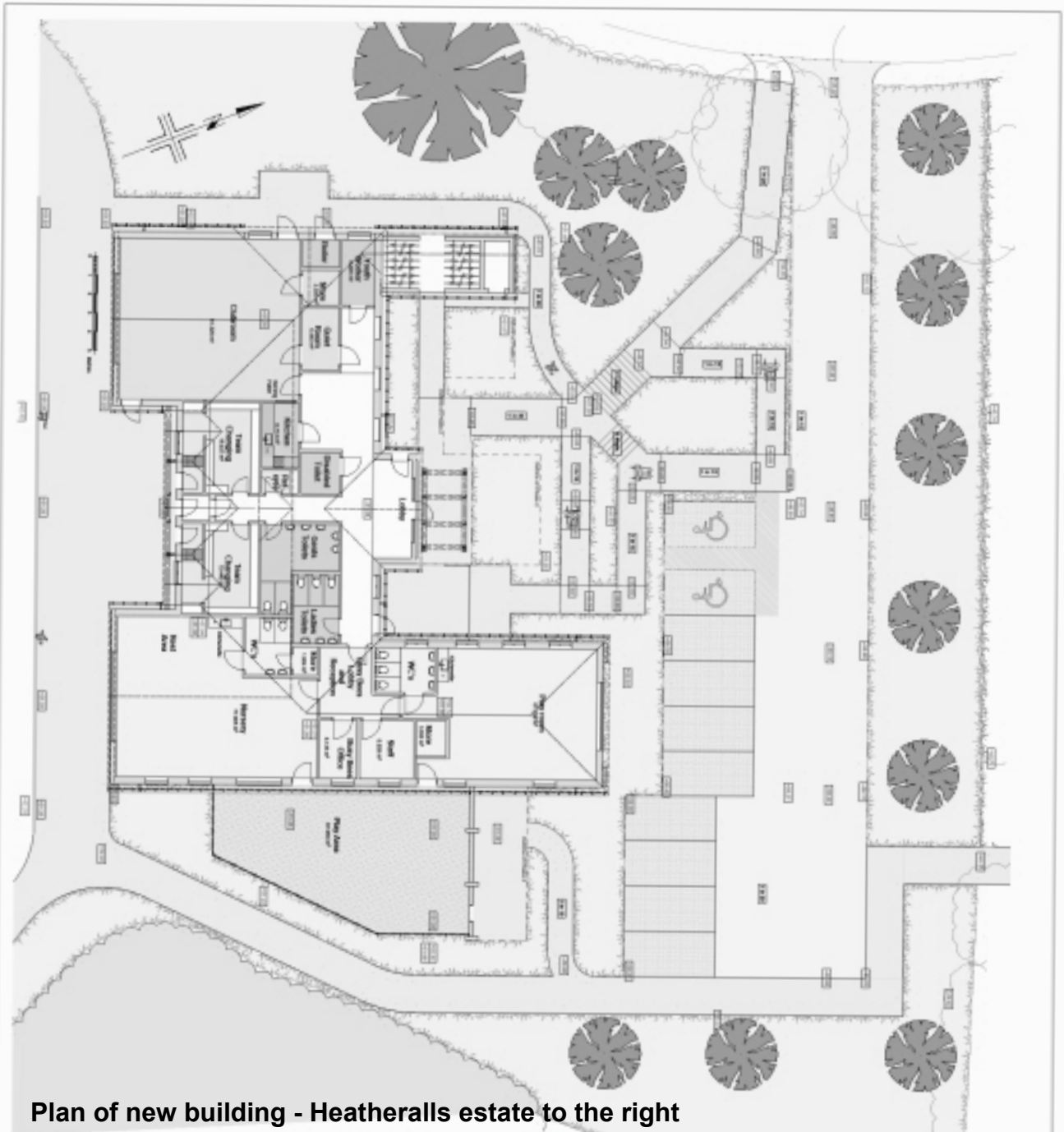
EXPENDITURE		INCOME	
Mowing and maintenance	£13,320.00	Precept	£41,484.00
Salaries and related costs	£29,348.00	Grants	£24,378.00
Office and administration	£7,713.00	Rents	£2,083.00
Grants	£1,404.00	Burial Ground	£922.00
Street lighting	£486.00	Interest	£361.00
General maintenance	£558.00	Other income	£1,460.00
"Free Resource" S137	£718.00	VAT recovered	£9,605.00
Minor items	£128.00	Total income	£80,293.00
Refurbishing the 'Cut'	£1,568.00		
Tennis courts resurfacing	£18,120.00		
Holding Field feasibility study	£3,036.00		
VAT paid	£6,769.00		
Total expenditure	£83,168.00		

Speed Limits

We have requested:
 30 mph Knowl Hill to bypass.
 20 mph B3051 and Newbury Rd.
 40 mph Winchester Rd to last house.
 50 mph from there to White Hill
 Decision by end of 2010



New building from the Holding Field



Plan of new building - Heatheralls estate to the right

The Children's and Young Person's Centre

PRELIMINARY

244	Phase 1	1188 14	1288 14	1388 14	1488 14	1588 14	1688 14	1788 14	1888 14	1988 14	2088 14	2188 14	2288 14	2388 14	2488 14	2588 14	2688 14	2788 14	2888 14	2988 14	3088 14	3188 14	3288 14	3388 14	3488 14	3588 14	3688 14	3788 14	3888 14	3988 14	4088 14	4188 14	4288 14	4388 14	4488 14	4588 14	4688 14	4788 14	4888 14	4988 14	5088 14	5188 14	5288 14	5388 14	5488 14	5588 14	5688 14	5788 14	5888 14	5988 14	6088 14	6188 14	6288 14	6388 14	6488 14	6588 14	6688 14	6788 14	6888 14	6988 14	7088 14	7188 14	7288 14	7388 14	7488 14	7588 14	7688 14	7788 14	7888 14	7988 14	8088 14	8188 14	8288 14	8388 14	8488 14	8588 14	8688 14	8788 14	8888 14	8988 14	9088 14	9188 14	9288 14	9388 14	9488 14	9588 14	9688 14	9788 14	9888 14	9988 14
-----	---------	---------	---------	---------	---------	---------	---------	---------	---------	---------	---------	---------	---------	---------	---------	---------	---------	---------	---------	---------	---------	---------	---------	---------	---------	---------	---------	---------	---------	---------	---------	---------	---------	---------	---------	---------	---------	---------	---------	---------	---------	---------	---------	---------	---------	---------	---------	---------	---------	---------	---------	---------	---------	---------	---------	---------	---------	---------	---------	---------	---------	---------	---------	---------	---------	---------	---------	---------	---------	---------	---------	---------	---------	---------	---------	---------	---------	---------	---------	---------	---------	---------	---------	---------	---------	---------	---------	---------	---------	---------